

## Vipros 558 Layout Drawings



Amada America Inc.  
7025 Firestone Blvd.  
Buena Park CA. 90621  
Phone: (714) 739 2111  
Fax: (714) 739 4099  
e-mail: [info@amada.com](mailto:info@amada.com)

# Contents

Contents.....	2
Planning the Location of the Vipros 558.....	3
Lifting the Machine.....	4
Machine Dimensions - Plan View.....	5
Machine Dimensions - Elevation View.....	6
Machine Dimensions - End View.....	7
Maintenance Areas.....	8

## Planning the Location of the Vipros 558

The following diagrams provide the details for positioning the Vipros 558.

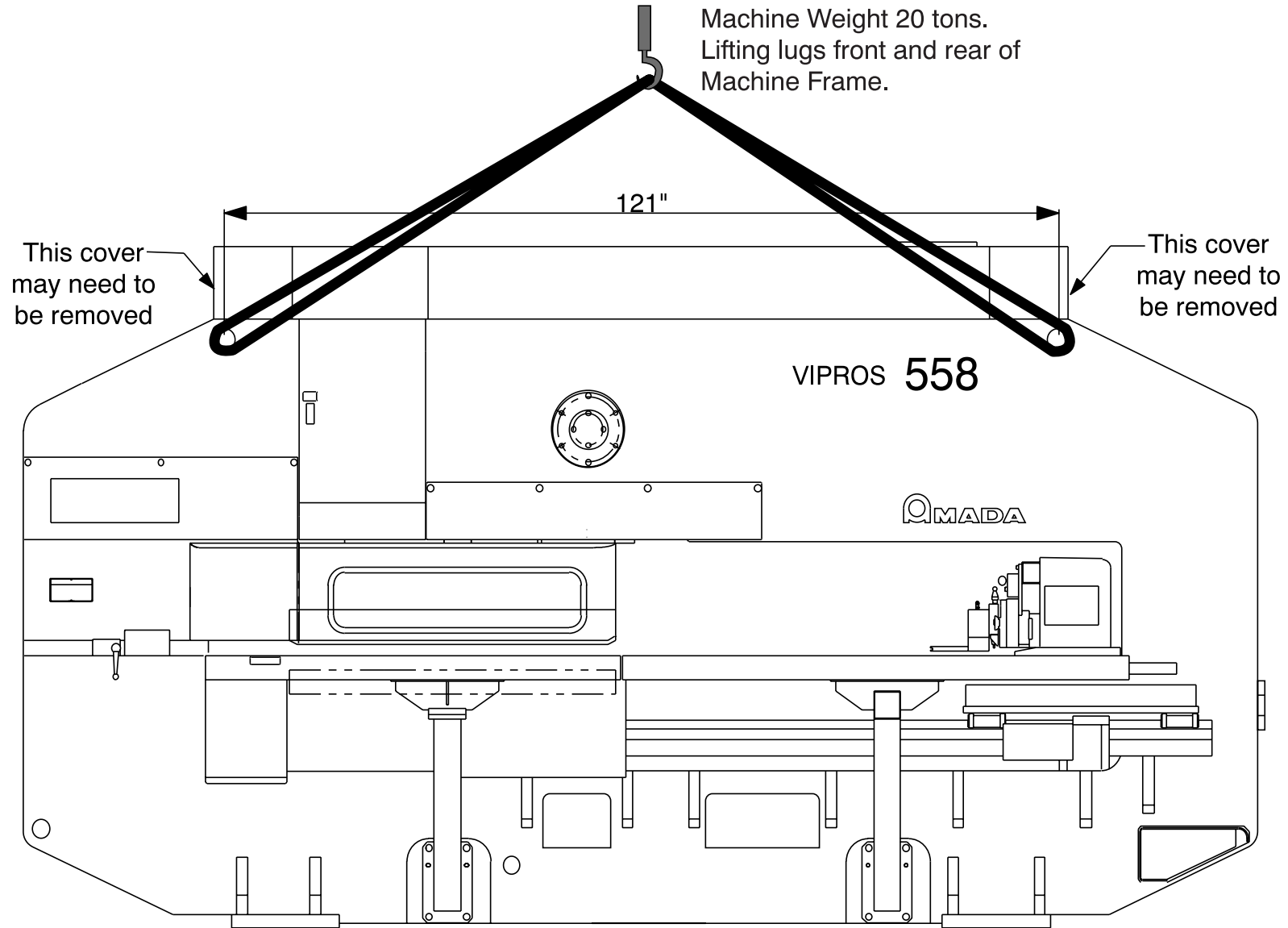
No obstacles are allowed in the worksheet travel area and the ceiling must be at least 40" above the top of the Vipros 558.

All of the maintenance safety areas recommended should be used, but at a minimum you must ensure that the doors of the Fanuc O4PC CNC unit can be opened.

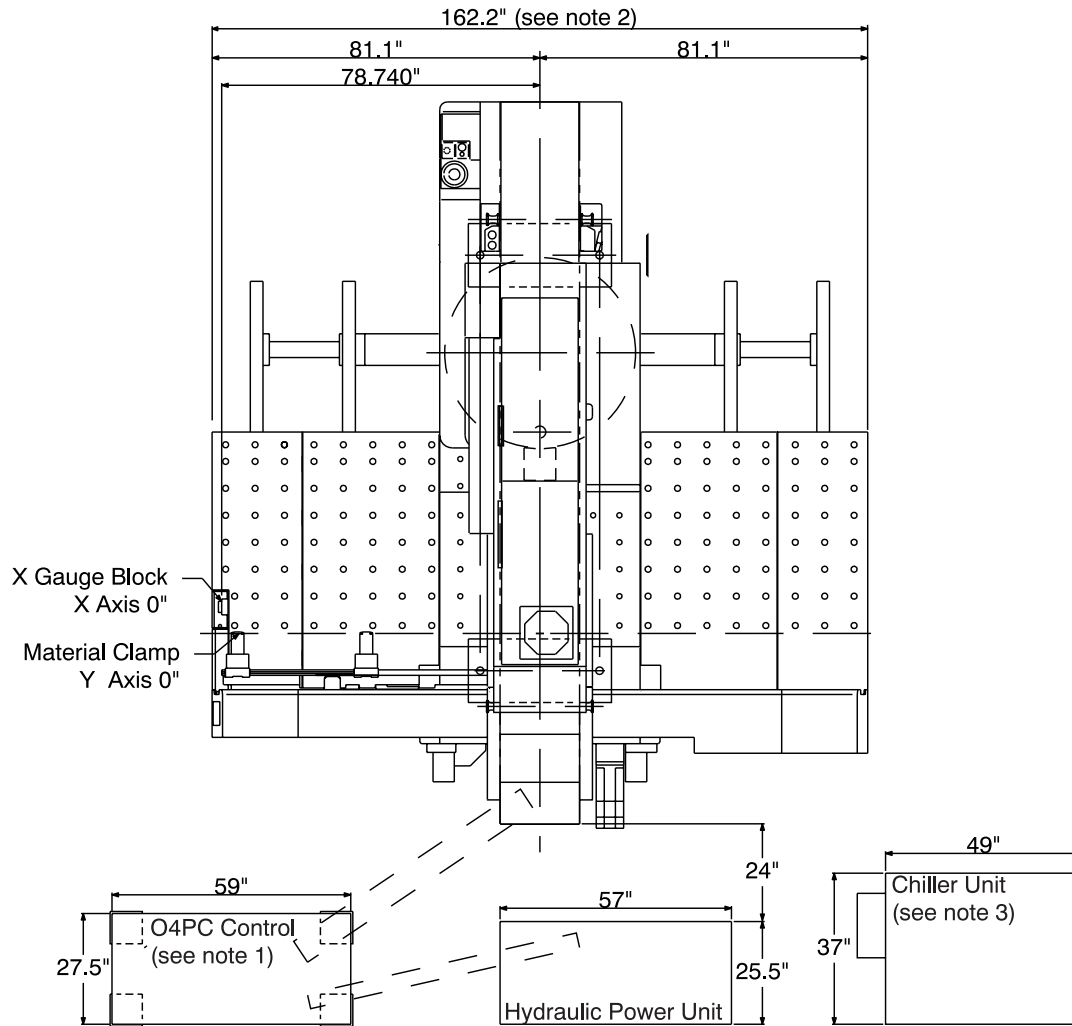
The Vipros 558, Fanuc O4PC control, and SBC-5.5 chiller must be protected from direct sunlight or other heat sources.

The floor must be of sufficient quality to adequately support the weight of the machine.

# Lifting the Machine

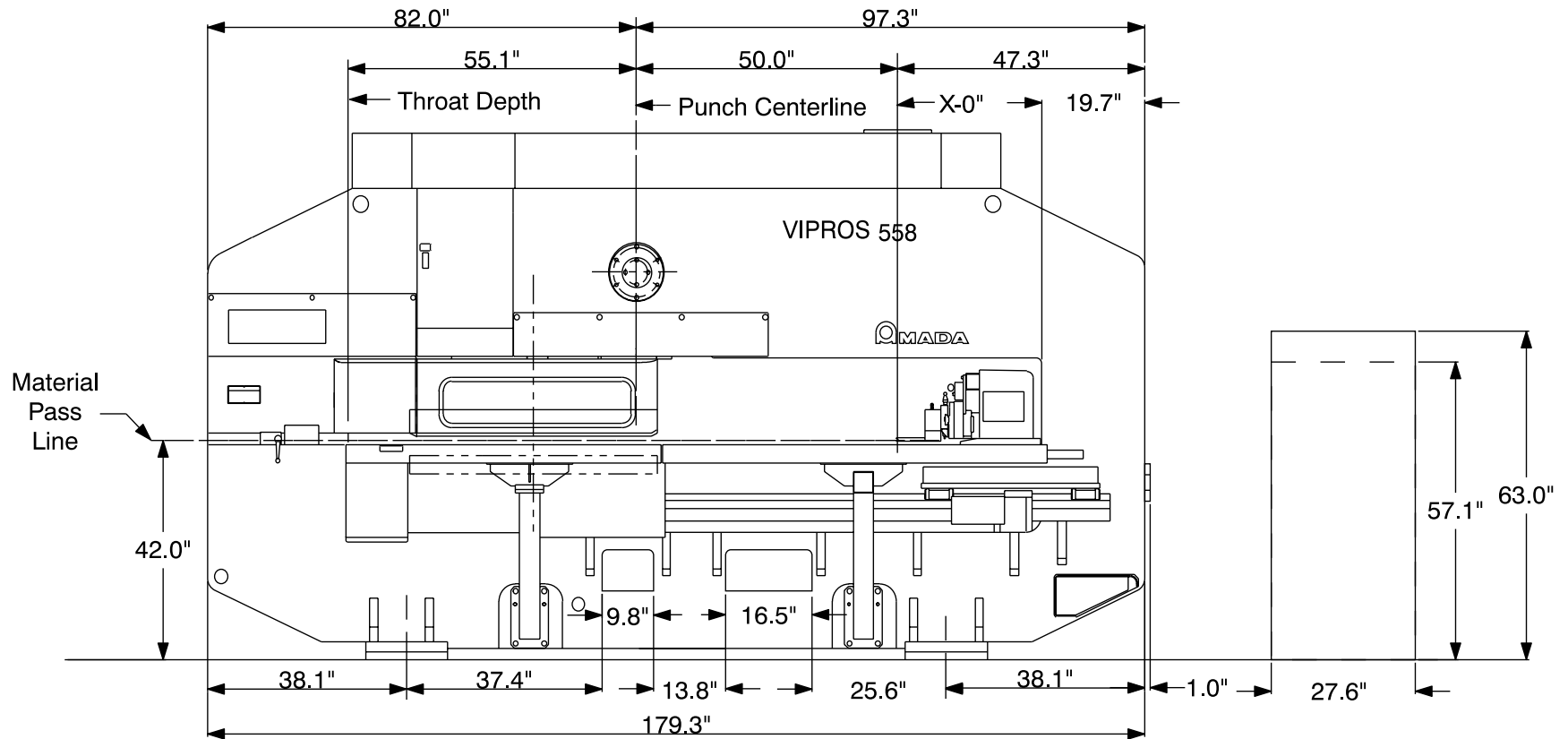


# Machine Dimensions - Plan View

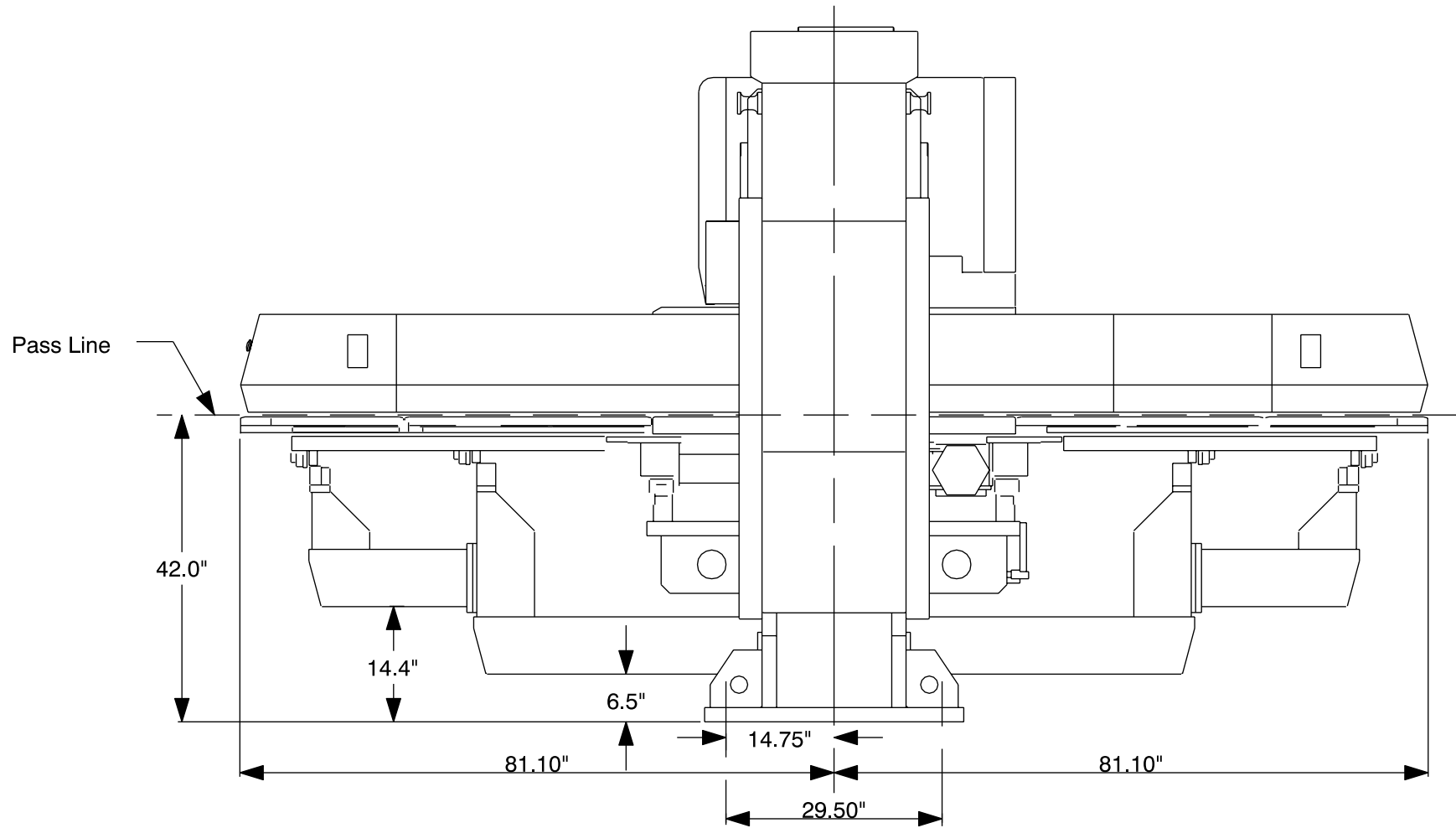


- Note 1: O4PC Control may be rotated 90° ccw from position shown.
- Note 2: Machine width for shipping 10'6".
- Note 3: Chiller Unit placement optional.

# Machine Dimensions - Elevation View



# Machine Dimensions - End View



# Maintenance Areas

